



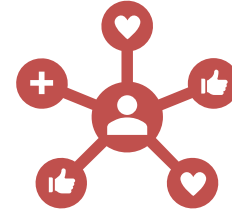
# Photo Chat #23

September 15<sup>th</sup>, 2020

# Before We Begin



**This meeting is being recorded, transmitted live and will be posted on Facebook and on the [blog](#).**



## Today

Industry News  
FREE Learning and Videos  
(documentaries, videos, fun and educational sources)  
Next photowalks in Zürich  
OUR Book Project  
Photoshop and Lightroom Tips  
Next activities

# Photo News



Whatever is new and relevant

Got something to share? [meetup@CHaya.photo](https://www.meetup.com/CHaya-photo)

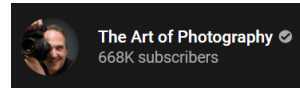




# Gear Heads – A7C



[On YouTube](#)



## This \$3,300 Chair Lets You Edit Photos While Looking Like a Supervillain

SEP 14, 2020   MICHAEL ZHANG

Share 5.1K

Tweet

30 COMMENTS



If you've always dreamed of editing your photos while looking like a supervillain, look no further than the Cluvens Scorpion Computer Cockpit. It's a \$3,300 chair that looks and moves like a scorpion.

# Documentaries, videos & Co.



- All sources welcome
  - Streaming services
  - Online “rental”
  - Youtube
  - websites
  - ...



- Contribute: TueCHat@CHaya.photo

# Wrong is Sometimes Right




Features Gallery Engage

## Video: Breaking the rules - 5 tips for extraordinary photos

15.09.2020



[On YouTube](#)



**COOPH** ✓  
1.07M subscribers





# Blur Effects with PS



[On YouTube](#)

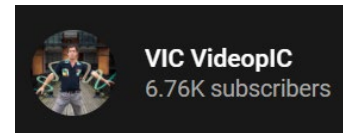
**PHLEARN**  
1.92M subscribers

# Vertigo Effect



VERTIGO EFFECT in video and hyper lapse - DOLLY ZOOM

[On YouTube](#)





# Previous Photowalk



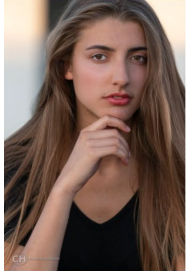


# TKS Models!



Bettina Oswald

Contact and connect with her on [Instagram](#) or by [email](#)



Delia Schmidt

Contact her by [email](#)

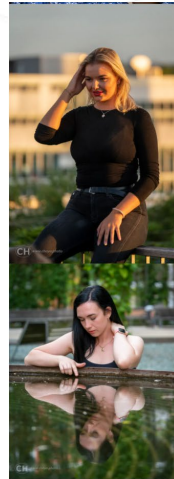


Helena

"Our" photographer is talented on both sides of the camera!

Contact and connect with her on [Instagram](#)

by [Mohammed](#)



Michelle Anja Oswald

Contact and connect with her on [Instagram](#)



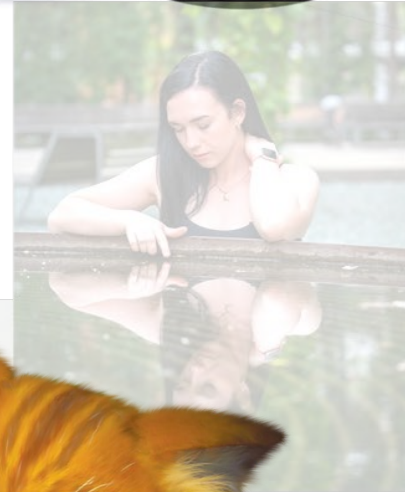
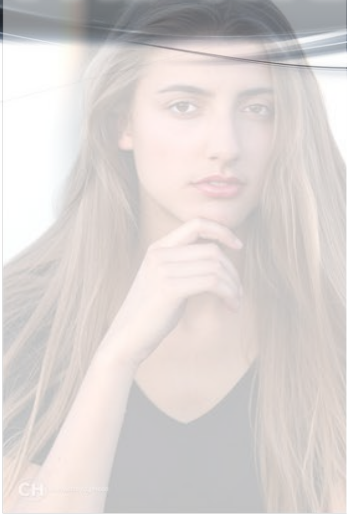
Roger Kolly

Contact him by [email](#)

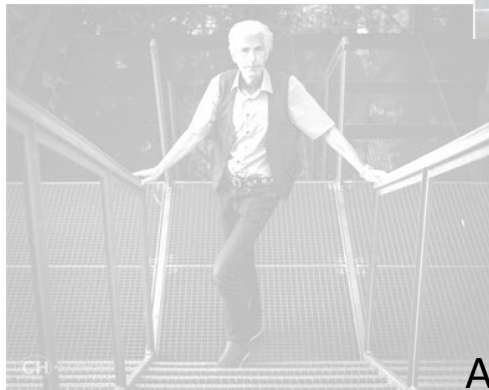
Clickable links on the [Blog Post](#): [www.chaya.photo/2020/08/zurich-photowalk-mfo-park](http://www.chaya.photo/2020/08/zurich-photowalk-mfo-park)



# TKS Models!



please  
Please  
**PLEASE**  
Send the photos  
to the models  
\*edited with ♥”



All models' contacts are listed on [this post](#)

# What's Next?





# 2020 Special Project

- OUR Book
  - Photos from Lockdown and Meetups
  - Self Portrait (NOT a selfie!) from each member
  - What else?

Detailed discussion at the  
end of today's CHat

See last week's self-portrait ideas [on the Blog](#).

# Next Photowalks



Up to 25 photographers

?Models?

Every Last Tuesday > 29/Sep

Always Free

X



10-12 photographers

4 models

Guidance – if desired

Thursday before the Free Photowalk > 24/Sep

@Rote Fabrik





# Coming Online in 3, 2, 1....

## Especial Photowalk with Models in Zürich!



Hosted by  
Cesar

Share



### Details

This is an especial Photowalk with 10-12 photographers and a minimum of 4 models.

If desired, I can provide some guidance to photographers needing some tips on portraiture, gear/camera settings and/or model direction (this is not a specific workshop or class, the guidance is limited in time and availability).

----- Minimum requirements -----

It is suited to all photographer levels, beginners and pro's alike. You should understand the basic operation of your camera.

----- Location -----

The details will be sent only to the participants and after the confirmation of the fee's payment is done. RSVP only if you agree to this and you will receive a message with the next steps.

----- Cancellation and refund -----

- If the event is cancelled from the organization the fee will be 100% refunded.
- If you cancel with more than a week in advance you will be fully refunded.
- If you cancel with 7 to 3 days in advance and nobody takes your place you will only be refunded 50% of the fee.
- Cancellations between 2 days and the start of the event will not be refunded.
- If the weather is bad we will find an alternative location and/or date and refund who cannot participate on the new date, if that is the case.

Organizer tools



Zürich Photography  
Public group

Thursday, September 24, 2020  
6:30 PM to 8:30 PM GMT+2  
[Add to calendar](#)

Zürich · Zürich  
How to find us  
The location displayed in the event is not correct. RSVP to receive the full information



Report this event

# Rote Fabrik



# Rote Fabrik



- Tips
- Software
- Workflow
- ...



# Photoshop Preferences

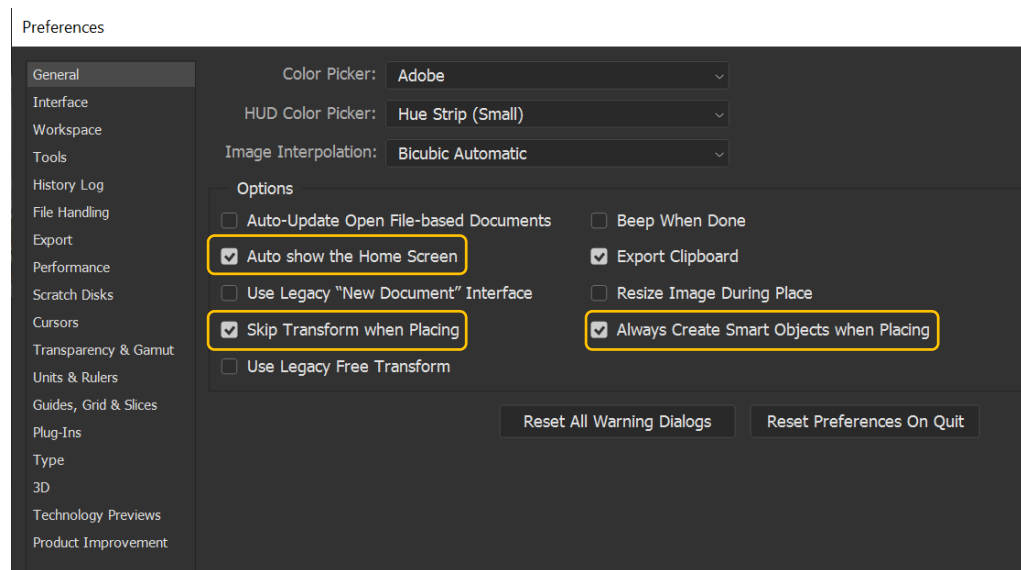


- Speed PS and/or workflow
- Focus on creating x repetitive tasks
- Access with
  - Ctrl-K (Windows)
  - Cmd-K (MacOS)



# PS Preferences: General

- Home Screen
  - presets and previous files
- Transform when placing
  - Easy add multiple files
- Smart Objects
  - Speed processing if not used

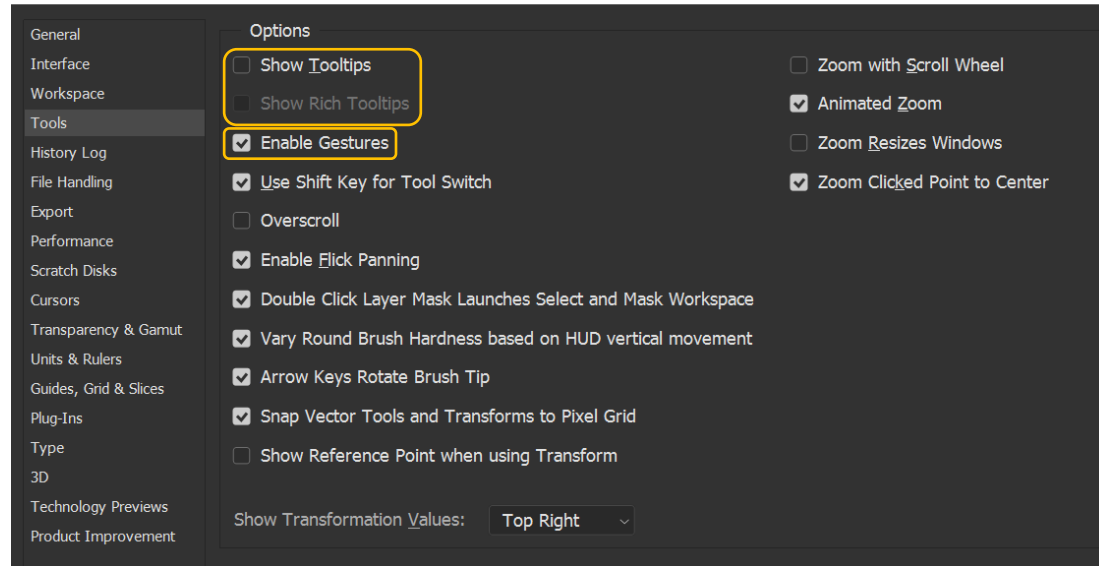


# PS Preferences: Tools



- Tooltips
  - If unnecessary = less processing
- Gestures
  - Only for touch input

## Preferences

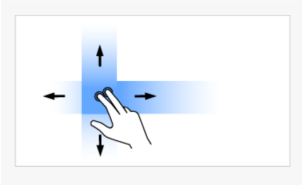


# Photoshop Gestures



## Touch workspace and gestures

If you own a Photoshop-supported Windows-powered device, such as the Surface Pro, you can use these touch gestures while using Photoshop on it.



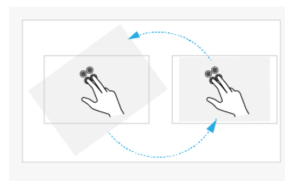
### Two-Finger Pan

Move two fingers in any direction on the canvas without changing the distance between them or the angle of the line connecting them. You may, this way, pan the canvas view.



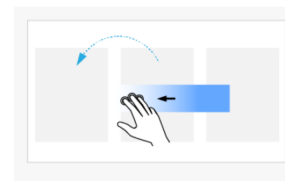
### Two-Finger Pan and Zoom

Move two fingers toward or away from each other. You may, this way, pan or zoom the canvas view (scaled).



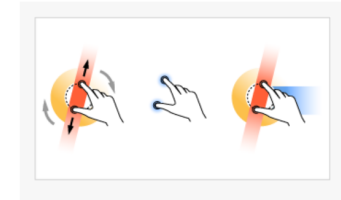
### Two-Finger Reset or Restore View

Double-tap two fingers on the tablet surface to reset the view to an unrotated transform that nearly fills the document canvas. Double-tap with two fingers again to restore the view to its previous state.



### Three-Finger Step Back in History (Undo)

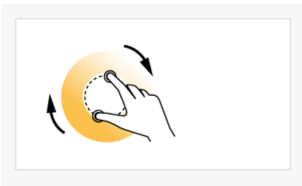
Move three fingers rapidly from right to left. The document view moves back one step in the change history.



### Two-Finger Free Transform (Pan, Zoom, and Rotate)

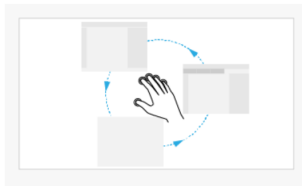
- Place two fingers on the tablet surface and rest motionless for a moment.
- Rotate the two fingers around the center of the line connecting them while simultaneously moving them nearer to or farther from each other.

You may, this way, freely pan, zoom, and rotate the canvas view.



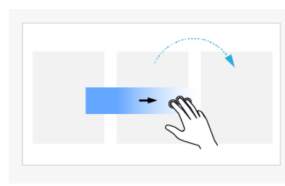
### Two-Finger Pan and Rotate

Rotate two fingers around the center of the line connecting them. You may, this way, pan and rotate the canvas.



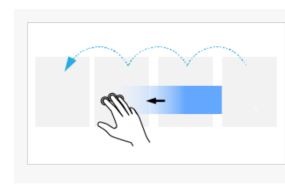
### Five-Finger Cycle Screen Mode

Tap once with five fingers to cycle through the three application display screen modes, including full screen.



### Three-Finger Step Forward in History (Redo)

Move three fingers rapidly from left to right. The document view moves forward one step in the change history.



### Three-Finger History Scrub

Move three fingers from right to left or from left to right. The document view moves continuously through the entire change history.

<https://helpx.adobe.com/photoshop/using/touch.html>

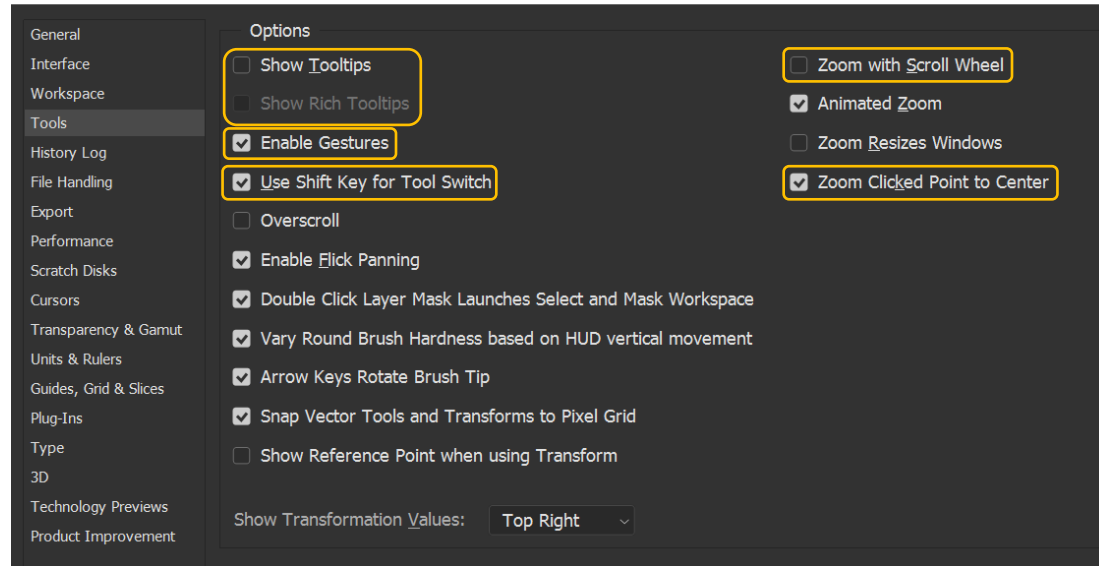


# PS Preferences: Tools



- Tooltips
  - If unnecessary = less processing
- Gestures
  - Only for touch input
- Shift Switch
  - Change tools easily
- Wheel Zoom
  - Vs. image panning

## Preferences



# PS Preferences: File Handling



- Background saves
  - Big time saver
- Recovery
  - Hopefully more often than the crashes
- TIFF
  - Size vs editability
- Compatibility
  - Annoying pop-up!

Preferences

File Saving Options

Image Previews: Always Save  Save As to Original Folder

File Extension: Use Lower Case  Save in Background

Automatically Save Recovery Information Every: 10 Minutes

File Compatibility

Camera Raw Preferences...

Prefer Adobe Camera Raw for Supported Raw Files

Use Adobe Camera Raw to Convert Documents from 32 bit to 16/8 bit

Ignore EXIF Profile Tag

Ignore Rotation Metadata

Ask Before Saving Layered TIFF Files

Disable Compression of PSD and PSB Files

Maximize PSD and PSB File Compatibility: Never

Cloud Documents Local Working Directory: Always

Choose Directory... Set Default Ask

F:\Adobe Cloud\

Recent File List Contains: 20 files

# PS Preferences: File Handling



- RAM and GPU
  - Severe performance influence

## Preferences

The screenshot shows the Photoshop Preferences dialog box with the 'Performance' section selected in the left sidebar. The 'Memory Usage' section is highlighted with a yellow box, showing 'Available RAM: 59998 MB', 'Ideal Range: 32999-43198 MB', and a slider for '\_Let Photoshop Use:' set to 35999 MB (60%). The 'Graphics Processor Settings' section is also highlighted with a yellow box, showing 'Detected Graphics Processor: NVIDIA Corporation GeForce GTX 1080/PCIe/SSE2' and the 'Use Graphics Processor' checkbox checked. Below this, there are buttons for 'Advanced Settings...', 'History States: 25', 'Cache Levels: 4', and 'Cache Tile Size: 1028K'. An information icon and a note are present at the bottom right of the Graphics Processor Settings section.

General  
Interface  
Workspace  
Tools  
History Log  
File Handling  
Export  
Performance  
Scratch Disks  
Cursors  
Transparency & Gamut  
Units & Rulers  
Guides, Grid & Slices  
Plug-Ins  
Type  
3D  
Technology Previews  
Product Improvement

Memory Usage

Available RAM: 59998 MB  
Ideal Range: 32999-43198 MB  
\_Let Photoshop Use: 35999 MB (60%)

Graphics Processor Settings

Detected Graphics Processor:  
NVIDIA Corporation  
GeForce GTX 1080/PCIe/SSE2

Use Graphics Processor

Advanced Settings...

History & Cache

Optimize Cache Levels and Tile Size for:

Web / UI Design  
Default / Photos  
Huge Pixel Dimensions

Options

Legacy Compositing

History States: 25  
Cache Levels: 4  
Cache Tile Size: 1028K

Set Cache Levels to 2 or higher for optimum GPU performance.

# PS Preferences: File Handling




- Scratch disks ideal world:
  - fast disk (SSD, M.2)
  - Not the same as OS

Preferences

General  
Interface  
Workspace  
Tools  
History Log  
File Handling  
Export  
Performance  
**Scratch Disks**  
Cursors  
Transparency & Gamut  
Units & Rulers  
Guides, Grid & Slices  
Plug-Ins  
Type  
3D  
Technology Previews  
Product Improvement

### Scratch Disks

	Active?	Drive	Free Space
1	<input checked="" type="checkbox"/>	F:\	220.99GB
2	<input type="checkbox"/>	C:\	702.94GB
3	<input type="checkbox"/>	D:\	1112.97GB
4	<input type="checkbox"/>	E:\	6721.36GB

 You can also change your scratch disks by holding control-alt when launching Photoshop.

# PS Preferences: File Handling



- Text input
  - ESC to cancel text editing

## Preferences



General

Interface

Workspace

Tools

History Log

File Handling

Export

Performance

Scratch Disks

Cursors

Transparency & Gamut

Units & Rulers

Guides, Grid & Slices

Plug-Ins

Type

3D

Technology Previews

Product Improvement

### Type Options

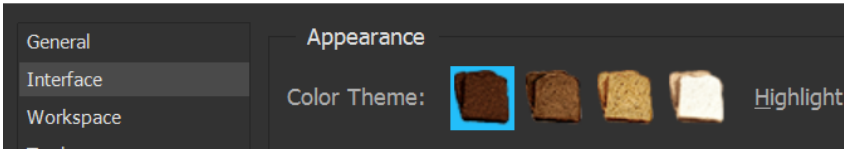
- Use Smart Quotes
- Enable Missing Glyph Protection
- Show Font Names in English
- Use ESC key to commit text
- Enable Type layer glyph alternates
- Fill new type layers with placeholder text

Number of Recent Fonts to Display: 10

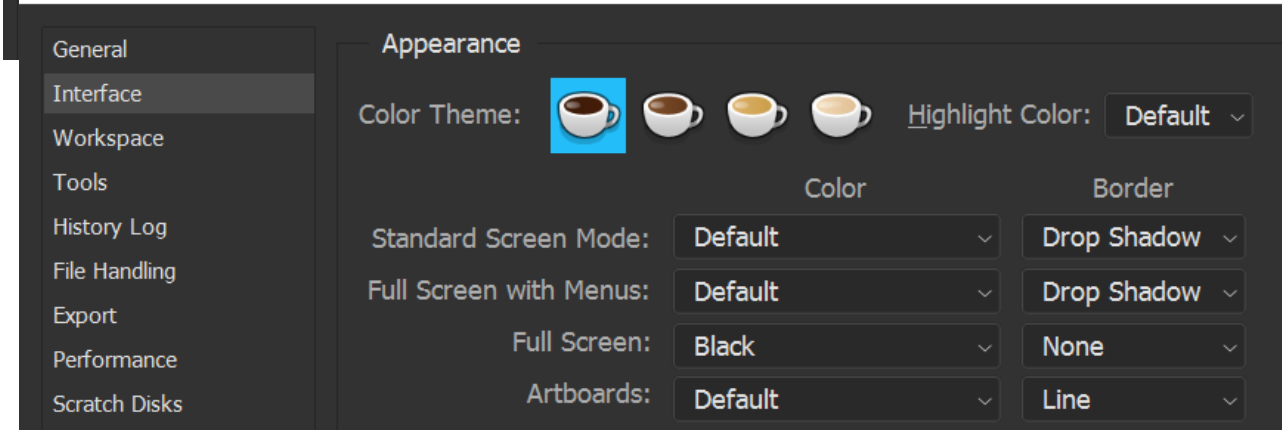
# PS Preferences: Interface



## Preferences



## Preferences



# Lightroom Tips



- Spot removal/local adjustment masks + ↑
  - Straight adjustments such as powerlines
- Local adjustment amount
  - Alt/Option + left button drag
- Mask off on Local Adjustments
  - ↑ tip works here too
- Ctrl/Cmd to temporarily activate Auto-Mask while masking

All links and this PDF:  
[www.chaya.photo/blog](http://www.chaya.photo/blog)



# Thank you

See you next [Tuesday!](#)