



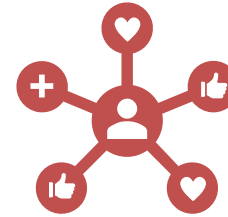
Photo Chat #13

June 16th, 2020

Before We Begin



This meeting is being recorded, transmitted live and will be posted on Facebook and on the [blog](#).



Today

1. Next Photowalk is NEXT WEEK
2. FREE Learning and Videos
(documentaries, videos, fun and educational sources)
3. Quick Photoshop Tips
4. Next activities



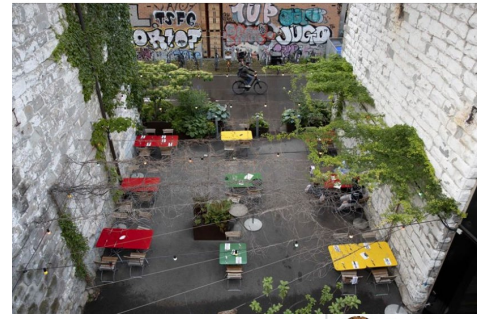
Previous Photowalk

Gorgeous Images!

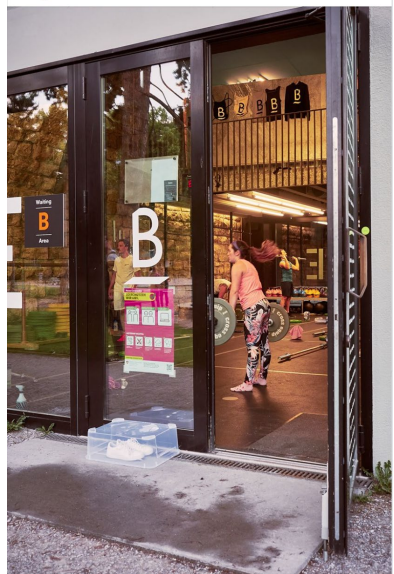
Rémi Bgx
2 June at 23:16



Ed Leijnse
Founding members · 30 May at 13:45



Nic Waespe
2 June at 18:08
Strong woman, weak man



Antonio Serra Torres Domingos
Founding members · 31 May at 22:34
Double clouds (2)



Jan Aidel
30 May at 12:32



[facebook.com/groups/CHaya.Meetup](https://www.facebook.com/groups/CHaya.Meetup)

Photowalk



🕒 Thursday, June 25, 2020
6:30 PM to 9:00 PM GMT+2

Meet 📍 Kalendarpl. 1
Kalendarpl. 1 · Zürich

📷 Freestylepark Zürich
Allmendstrasse
8045 Zürich

[Parking link](#)
Parkplatz Gfellstrasse
Parking lot

- 📍 Directions
- 🔖 Save
- 📍 Nearby
- 📧 Send to your phone
- 🔄 Share

📍 Gfellstrasse 20, 8002 Zürich



Photowalk

- Already 15 Photographers
- Confirmed models



 [mvchellee](#)



 [daniel89r](#)



 [cha0wen](#)

Photowalk Theme: "TWO"

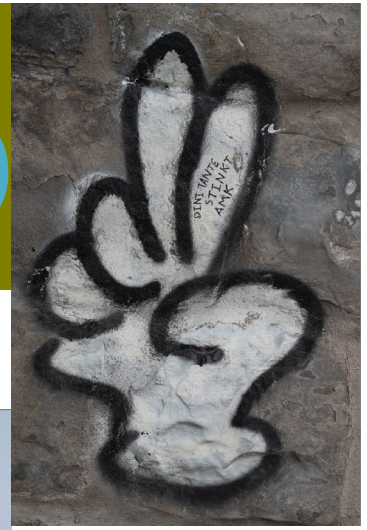


2

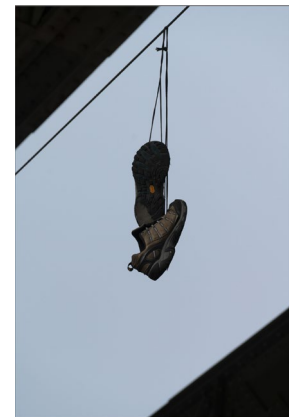


2

two



TO

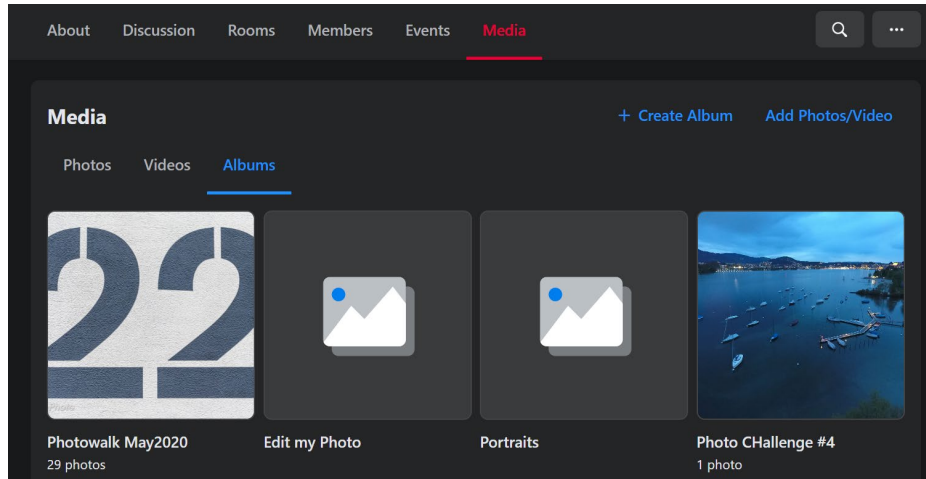


Post Photos

Chaya Meetups

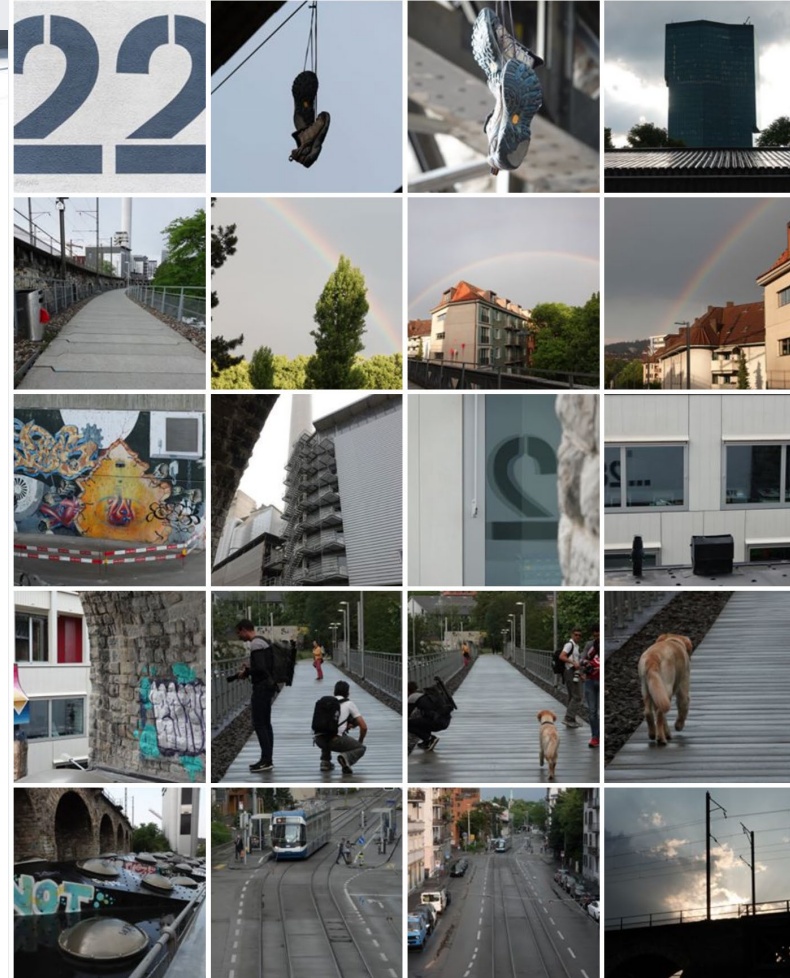
Private group

- Facebook group
 - Album with easy uploads
 - Comments, shares, likes...



Photowalk May2020

A photowalk with a small group around the Viadukt area.
Suggested theme: Two (or TO if anyone wanted it that way) · Updated on Thursday



Weekend Photowalk



- Location TBD
 - accessible with public transport
 - 1-2 hours max “distance”
- Models and Landscape
- Vote for the dates that suit you:

<https://doodle.com/poll/gs6cwrggnknca2yt>

Adobe Updates

Photoshop desktop

June 2020 release (version 21.2)



Better, faster portrait selection

A completely new code of Select Subject, just for portraits. Create precise selections of people with just one click.



Adobe Camera Raw improvements

The updated Adobe Camera Raw workspace puts your tools right where you need them so you can edit more easily and efficiently.



Auto-activate Adobe Fonts

Photoshop now automatically finds and adds all available Adobe Fonts to your libraries when you open a Photoshop document.



Add rotatable patterns

Easily change the orientation and add a rotation to any pattern in Pattern Overlays and Pattern Fill layers.



Improved Match Font

Experience better accuracy with improved Match Font that supports vertical text, multiple-line detection, and more fonts.

Adobe Updates

Top new features

June 2020 release (version 9.3)



Performance Improvements

Experience speed improvements and a smoother editing experience.



UI Improvements

Get the most of the **Sync**, **Tone Curve**, and **Color** tools with the updated look and feel.



Local Hue Adjustment

Control the hue of a color in a specific area of your image using a local adjustment tool.



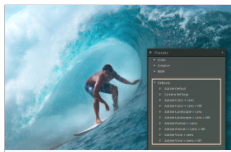
ISO Adaptive Presets

Now create an ISO adaptive preset from within Lightroom Classic.



Centered Crop Overlay

New 2x2 grid overlay while cropping, providing guidance on the center of the image.



New Defaults presets

Now quickly preview and apply different default settings using the new **Defaults** presets.



Support for new cameras and lenses

Find the full list of supported cameras and lens profiles.



Other enhancements

Find information about other new enhancements in this release.

Documentaries, videos & Co.



- All sources welcome
 - Streaming services
 - Online “rental”
 - Youtube
 - websites
 - ...
- Contribute: TueCHat@CHaya.photo



Colour Matching



- Great tutorial for Compositing
 - Tips to cut subject
 - Colour match = convincing Composite



[Piximperfect](#)



Portrait Editing



- Many different tips
 - Remove people/objects from background
 - Retouch Glare and tattoos out

[PHLEARN](#)



Portrait Editing: Remove People, Glare & Tattoos

Learn how to edit a portrait, removing common distractions like people in the background, harsh light and glare, and even a tattoo! We also show you a quick and effective technique to add beautiful color toning to your photos.

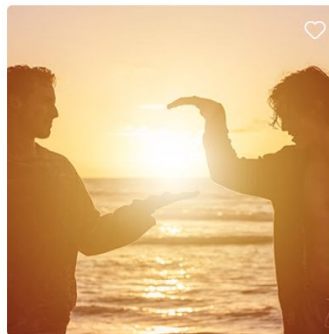


Creative Use of Gradients



- Improve photos using gradients
 - Add atmosphere
 - Add background/sky
 - Light rays

[PHLEARN](#)



5 Beautiful Effects with Gradients | Sun Flare, Light Rays & Background Coloring

Add gradients to your photo editing toolbox! Learn how to create light rays, brighten a subject, create interesting backgrounds, create epic sunset effects, and more!





Free Learning

- FREE on [CreativeLive](#)

Tuesday

June 16th

9:00AM PHOTO & VIDEO

Fundamentals of DSLR Filmmaking

VICTOR HA

June 20th

9:00AM PHOTO & VIDEO

Fundamentals for Great Prints

MIKE HAGEN

Monday

June 22nd

9:00AM PHOTO & VIDEO

Working with Models

MATTHEW JORDAN SMITH, YOANNA HOUSE

Wednesday

June 24th

9:00AM PHOTO & VIDEO

Using Your Style To Diversify Your Photography

STEVE SWEATPANTS

Wednesday

June 17th

9:00AM PHOTO & VIDEO

Color Theory for Photographers

BLAKE RUDIS

Friday

June 19th

9:00AM PHOTO & VIDEO

Shooting and Editing for Mobile Photography

ELISE SWOPES

9:00AM PHOTO & VIDEO

Getting Started in Music Photography with Red Bull Photographer Todd Owyong

TODD OWYOUNG

Tuesday

June 23rd

9:00AM PHOTO & VIDEO

Food Photography

PENNY DE LOS SANTOS

Thursday

June 25th

9:00AM PHOTO & VIDEO

Commercial Portraiture

JOEY L

Thursday

June 18th

9:00AM PHOTO & VIDEO

How to Take the Perfect Headshot

PETER HURLEY

Quick Tips

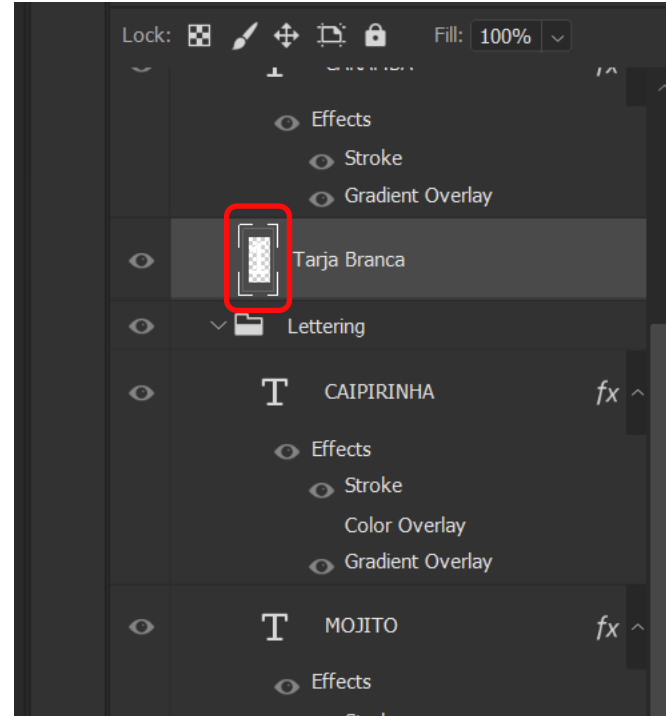


- Fixed section
- Open for everyone (PLEASE share!)
- Everything goes (PG13, bitte! :p)



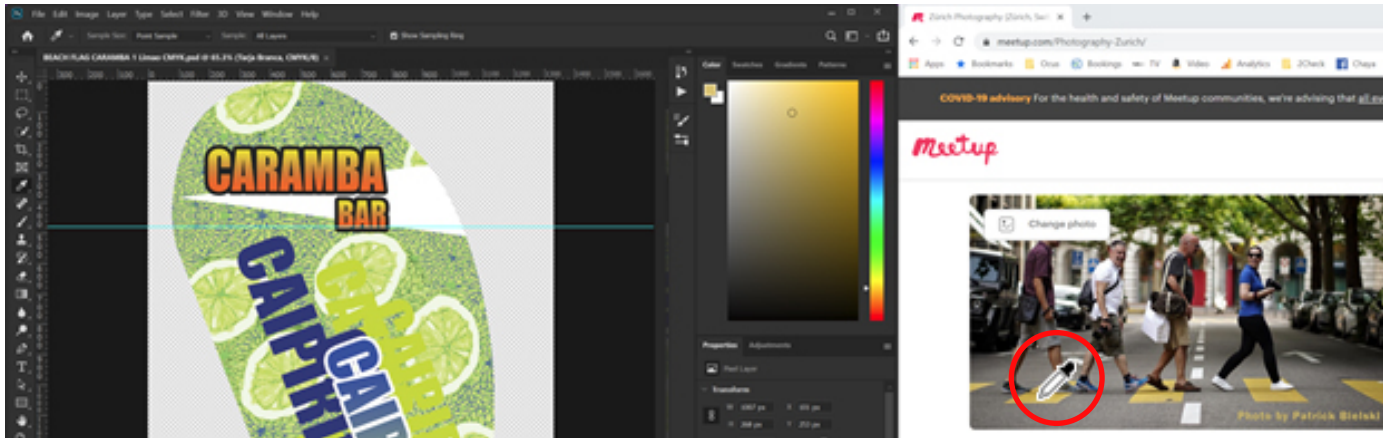


- Zoom to Layer
 - Alt/Option click
- Select Layer Content
 - Ctrl/Cmd click
- Zoom to fit
 - Ctrl/Cmd 0
- Zoom 100%
 - Ctrl/Cmd 1





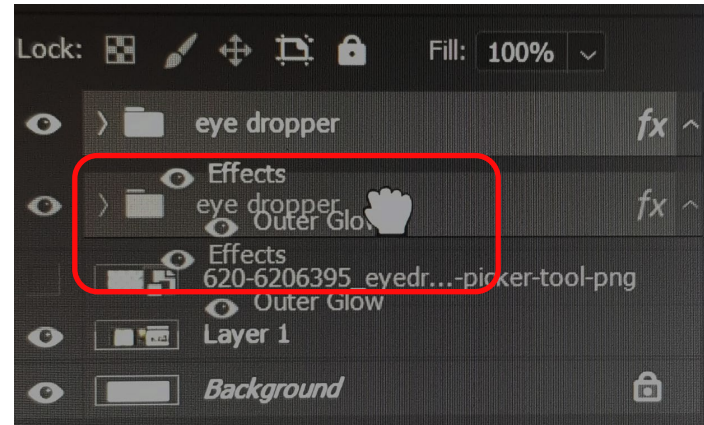
- Pick a color OUTSIDE Photoshop
 - Drag eye-dropper to other window





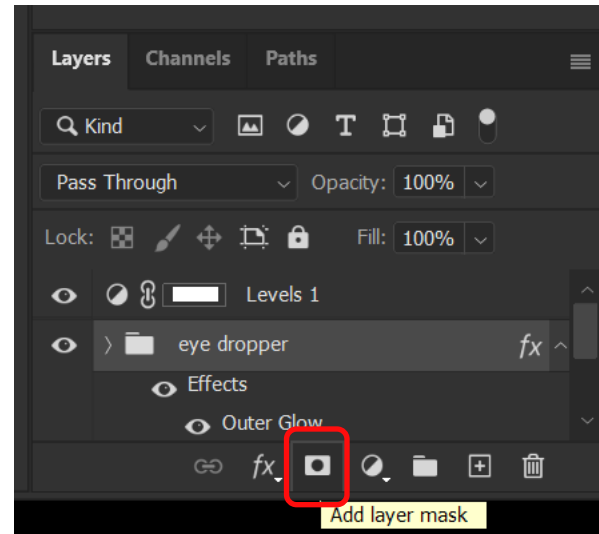
QT: Photoshop

- Duplicate Duplicate (almost) Everything
 - Ctr/Cmd J
 - Drag with Alt/Option
 - Layers
 - Mask
 - Effects



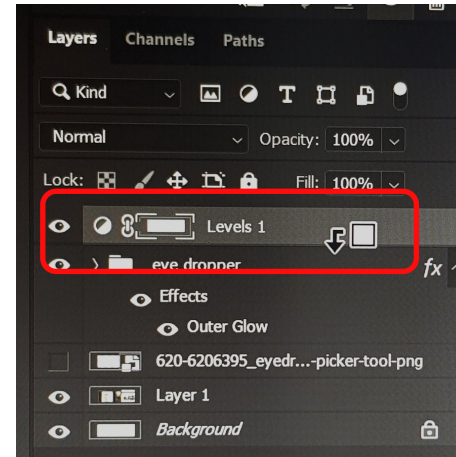


- Fill with an empty mask
 - Hold Alt/Option and click Mask





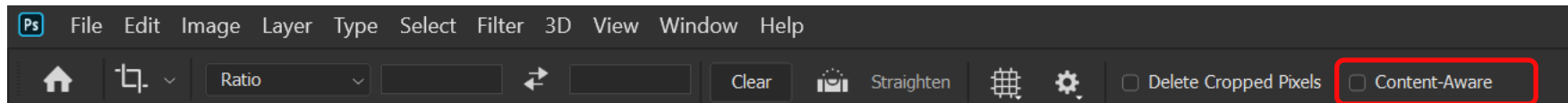
- Easy Clipping Layer
 - This layer affects only the underlying layer
 - Hold Alt/Option + Click the line between layers



QT: Photoshop



- Content Aware Crop
 - Fill corners while cropping
- *Bonus: hold Ctrl/Cmd to straighten the horizon



Next?



- Photowalk on June 25th
- Studio session?
- What else?

All links and this PDF:
www.chaya.photo/blog



Thank you

See you next [Tuesday!](#)